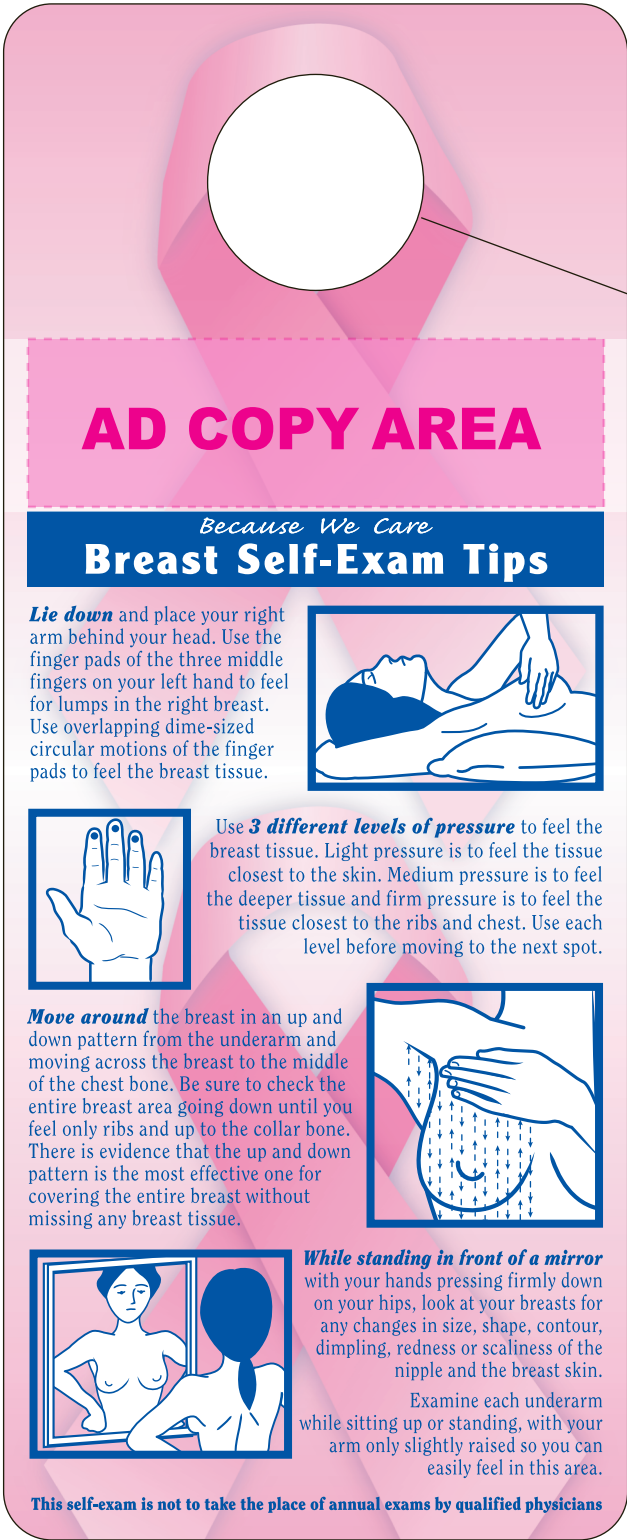
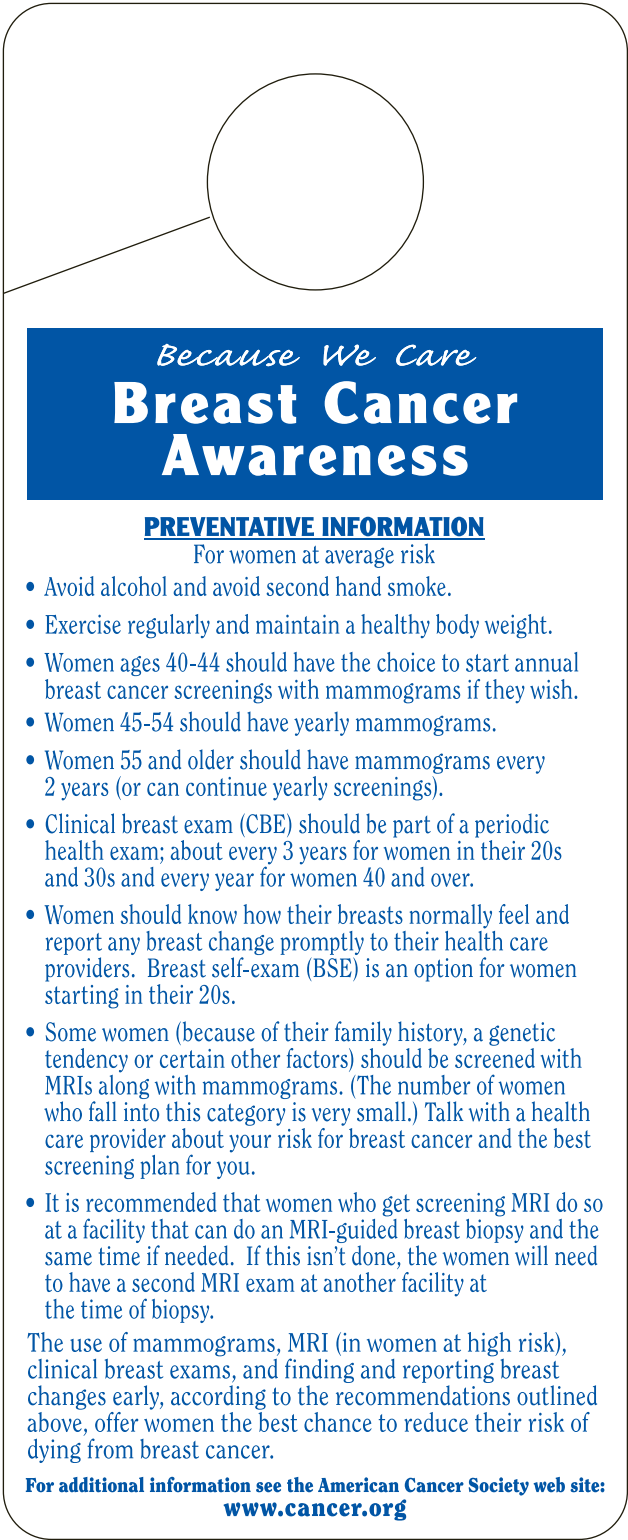


BSE10-R: Full Color Ribbon Breast Cancer Self Exam Card

BSE10-R: stock front



BSE10-R: stock back



Please remove all guideline indicators before submitting artwork



= Final Cut Size: 3.25" x 8"



= Ad Copy Area : 3" x .875"

Art must be within clearances - 0.125" on all sides.